

# 10966 Le Conte

WESTWOOD

OFFICE SPACE LEASE OPPORTUNITY



**PROPERTY:** 2-story, mixed-use building

**RENTAL RATE:** \$2.95 per RSF, per month, FSG

**LEASE TERM:** 3 - 5 years

**IMPROVEMENTS:** Negotiable

## CURRENT AVAILABLE SPACES:

Suite 204 1,202 RSF

Suite 207 1,223 RSF

Suite 208 96 RSF

Suite 209 425 RSF



FOR LEASING INQUIRIES CONTACT:

**JOE KING** 310.442.3375  
jking@madisonpartners.net

**STEVE SALAS** 310.442.3385  
ssalas@madisonpartners.net

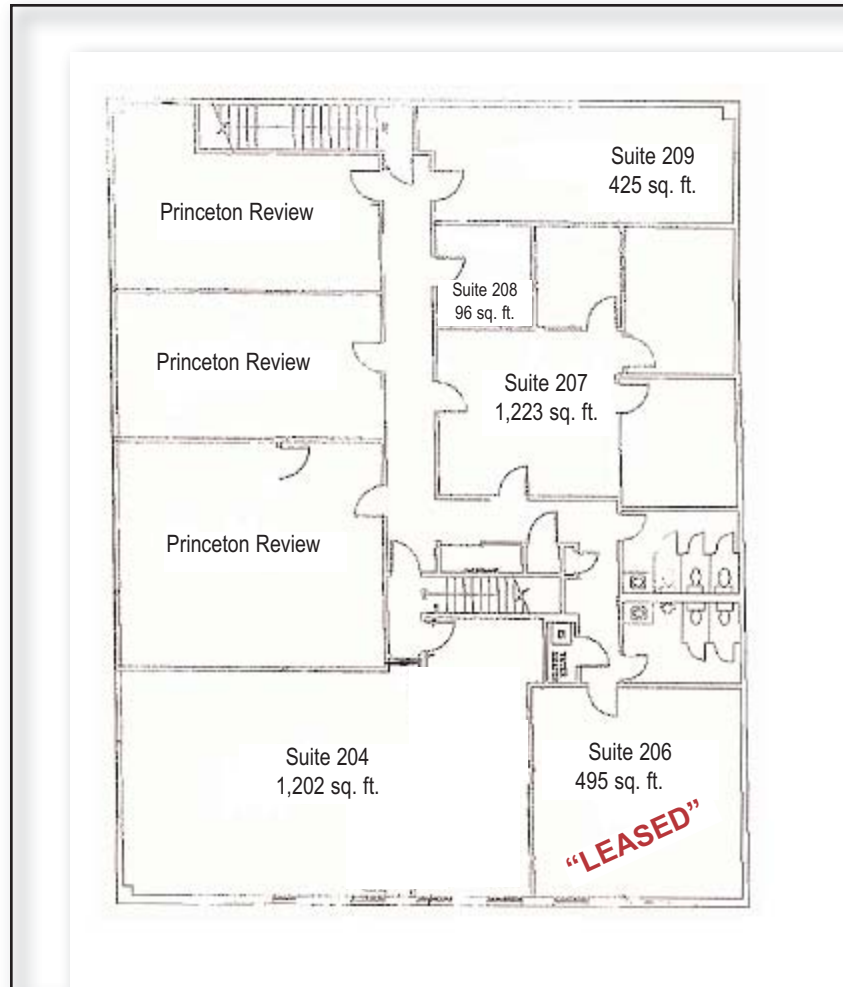
## AMENITIES

- Corner location at Le Conte & Gayley
- Directly across from UCLA
- Great demographics and foot traffic; 35,000 students in the immediate area

©2008 Madison Partners. The information above has been obtained from sources believed reliable. While we do not doubt its accuracy, we have not verified it and make no guarantee, warranty or representation about it. It is your responsibility to independently confirm its accuracy and completeness. Any projections, opinions, assumptions or estimates used are for example only and do not represent the current or future performance of the property. The value of this transaction to you depends on tax and other factors which should be evaluated by your tax, financial and legal advisors. You and your advisors should conduct a careful, independent investigation of the property to determine to your satisfaction the suitability of the property for your needs.

# 10966 Le Conte, Westwood, CA

## OFFICE SPACE LEASE OPPORTUNITY



2nd Floor Plan



FOR LEASING INQUIRIES CONTACT:

**JOE KING** 310.442.3375  
jking@madisonpartners.net

**STEVE SALAS** 310.442.3385  
ssalas@madisonpartners.net