

WESTSIDE MEDIA CENTER

12100 West Olympic Boulevard

Los Angeles, CA



“CREATIVE TURN-KEY SUBLEASE”

BUILDING: This building park consists of three contemporary, low-rise office buildings, nestled within a campus environment of lush gardens, outdoor seating arrangements and water features. It contains Bodies in Motion Health and Fitness Club as well as the Lemon Moon Cafe on-site and secured, subterranean parking.

PREMISES:	Suite	Size	Rate
	400	11,912 RSF	\$3.75 FSG

PARKING: 4/1,000 available at prevailing rates

AVAILABLE: Immediately after execution of sublease documents and Master Landlord consent

SUBLEASE TERM: Through June 30, 2010

FURNITURE: Space includes all furniture



FOR INQUIRIES CONTACT:

STEVEN SALAS
310.442.3385

ssalas@madisonpartners.net

JOE KING
310.442.3375

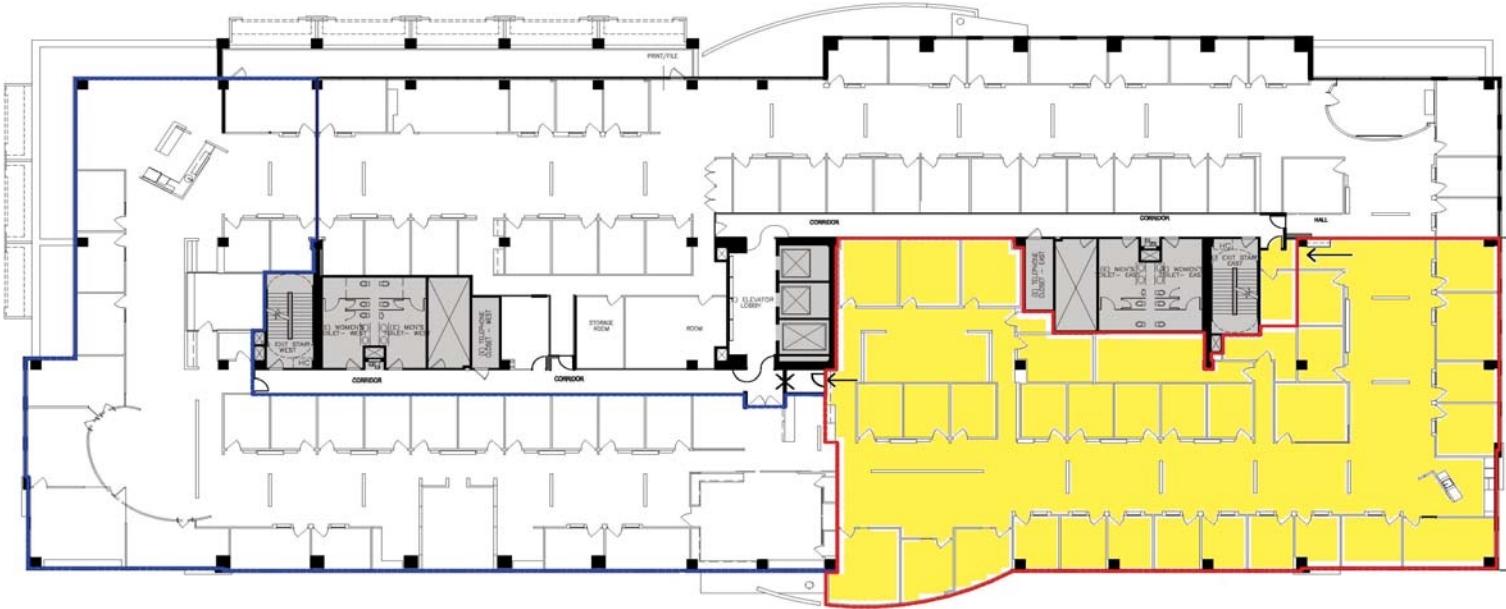
jking@madisonpartners.net

12121 Wilshire Boulevard
Suite 959
Los Angeles, CA 90025

12100 West Olympic Boulevard

Los Angeles, CA

Suite 400 - Approximately 11,912 RSF



- 16 Window offices
- 10 Interior offices
- 21 Custom built in workstations
- 4 Edit mixing rooms
- 1 Conference room
- 1 Kitchen
- Multiple storage areas
- Server / IT room



FOR INQUIRIES CONTACT:

STEVEN SALAS

310.442.3385

ssalas@madisonpartners.net

JOE KING

310.442.3375

jking@madisonpartners.net

12121 Wilshire Boulevard

Suite 959

Los Angeles, CA 90025