

# 9724 Washington Boulevard

D O W N T O W N , C U L V E R C I T Y

CREATIVE OFFICE SPACE FOR SUBLEASE

## PROPERTY FEATURES

- Free standing building
- 24-hour access, 7 days per week
- Best creative office in Downtown
- Great amenities within walking distance
- Prime location



## BEST CREATIVE SUBLEASE IN CULVER CITY

**RENTAL RATE:** \$3.00 per RSF, per month, Full Service Gross

**SIZE:** 2,995 square feet

**SUBLEASE TERM:** 6-12 months

**PARKING:** City parking lots

**DESCRIPTION:** Shared kitchen and conference room

- 3 window offices
- 10 workstations



FOR LEASING INQUIRIES CONTACT:

**JOE KING**  
jking@madisonpartners.net  
310.442.3375

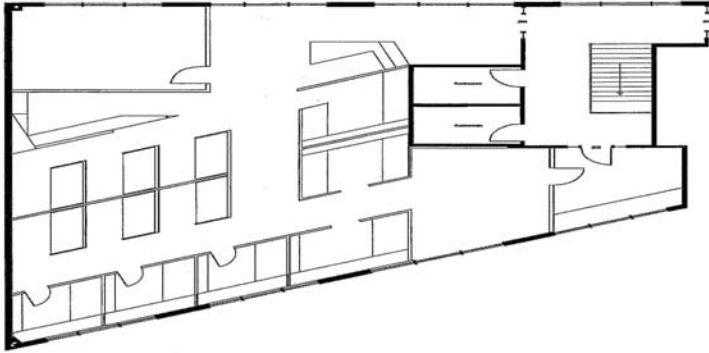
**STEVE SALAS**  
ssalas@madisonpartners.net  
310.442.3385

# 9724 Washington Boulevard

D O W N T O W N , C U L V E R C I T Y

CREATIVE OFFICE SPACE FOR SUBLEASE

Floor Plan



FOR LEASING INQUIRIES CONTACT:

**JOE KING**  
jking@madisonpartners.net  
310.442.3375

**STEVE SALAS**  
ssalas@madisonpartners.net  
310.442.3385

© 2009 Madison Partners. The information above has been obtained from sources believed reliable. While we do not doubt its accuracy, we have not verified it and make no guarantee, warranty or representation about it. It is your responsibility to independently confirm its accuracy and completeness. Any projections, opinions, assumptions or estimates used are for example only and do not represent the current or future performance of the property. The value of this transaction to you depends on tax and other factors which should be evaluated by your tax, financial and legal advisors. You and your advisors should conduct a careful, independent investigation of the property to determine to your satisfaction the suitability of the property for your needs.